

Stainless Steel Chains



FliteTop



Straight Running Chains

- M815** (gap 2.8mm), **815** (gap 1.8mm): single hinge
- 915** (gap 1.6mm): with reduced gaps, for combiners
- X915**: brushed hinge, for inclined combiners
- HD**: Heavy Duty, increased pin hardness
- HD 9157**: Heavy duty hinge 57mm
- 2815**: double hinge
- 803**: mini hinge
- 515**: 1" pitch, infeeding bottle washers



Sideflexing Chains

- 881/981**: bevel retention
- 881T/981T**: tab retention
- 981M**: magnetic, with brushed side hinge
- HD 981M**: Heavy Duty, increased pin hardness
- HD 9857M**: Heavy Duty hinge 57mm
- 982T**: reduced sideflexing radius



PG

Chains with rubber top



**Smooth Handling
Low Wear/Elongation**

High pin hardness for better
resistance to elongation

Very good flatness and surface finish

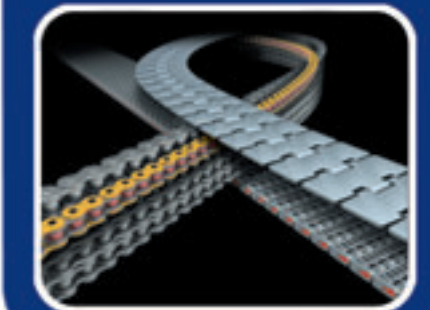


Materials:

- Prima** Special Cr-Ni ferritic cold rolled stainless steel
- SS-4** Cold rolled Cr-Ni ferritic stainless steel
- SS** Cr-Ni austenitic cold rolled stainless steel

Gripper Chains

REGINA



FliteTop

EW 1873T Long fingers



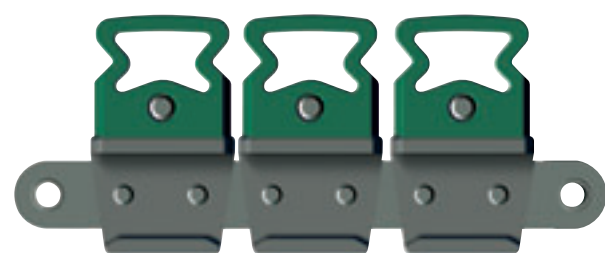
EW fingers flex without increasing the force over product and conveyor. Particularly suitable for conveying empty glass and PET containers.

GU 1873T "U" style



GU 1873T: for special applications.

GD 1873T "D" style



GD 1873T offers a flat and continuous contact surface between the rubber part and the conveyed product. The particular section guarantees controlled and uniform force over product and conveyor.

GW 1873T Short fingers



GW finger exerts a higher force on conveyed product. Particularly suitable for conveying heavier container and packaged products.



**Gentle Handling
Low Wear**



Special rubber material, long life without losing elasticity

Rubber is fixed to the flight by means of a metal pin for all Gripper Chains. Eliminate undesired pop-off

LBP Chains and Belts



FliteTop Matveyor



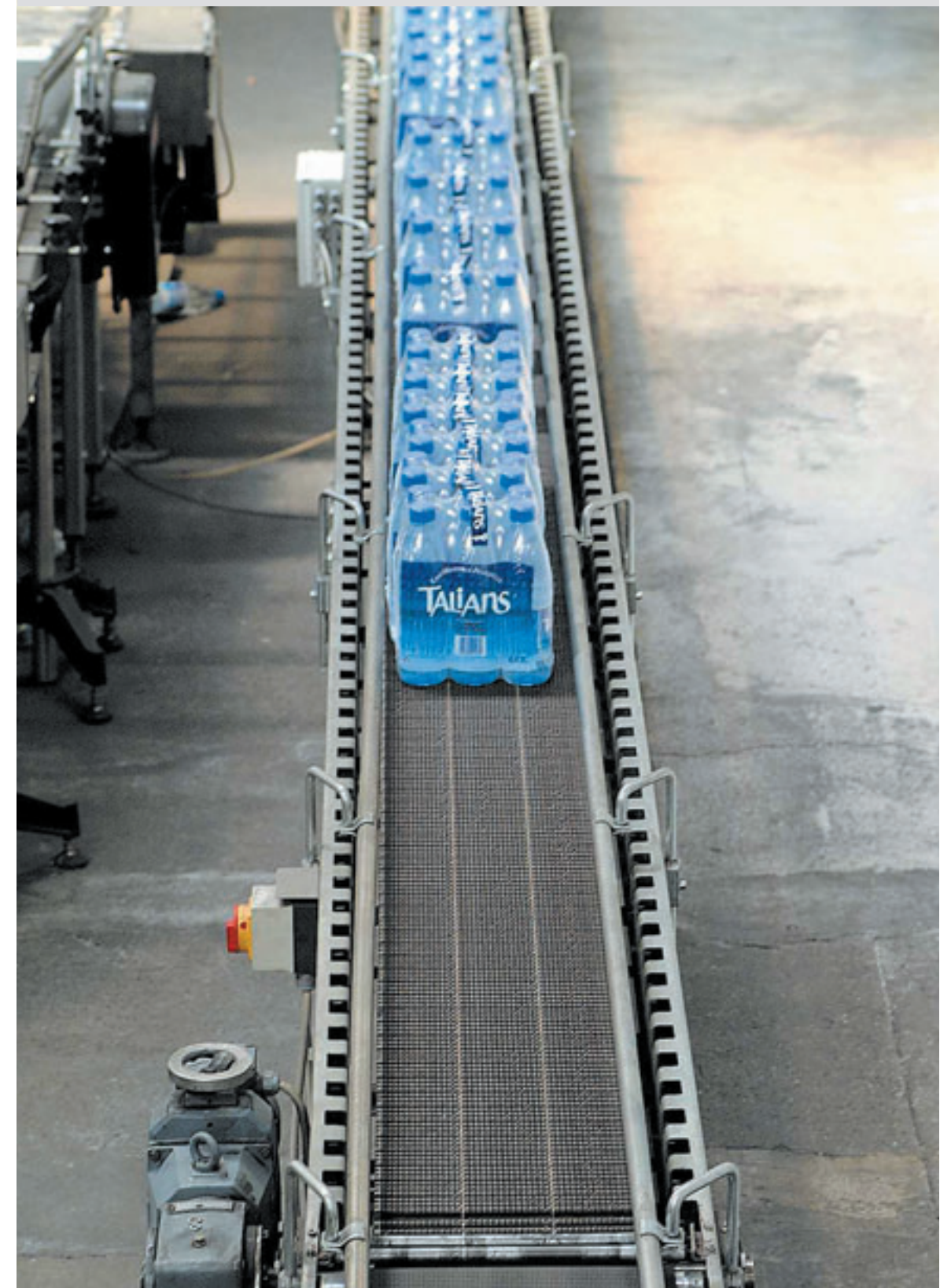
LBP 821
Straight running double hinge
Widths 7 1/2 - 10 - 12.



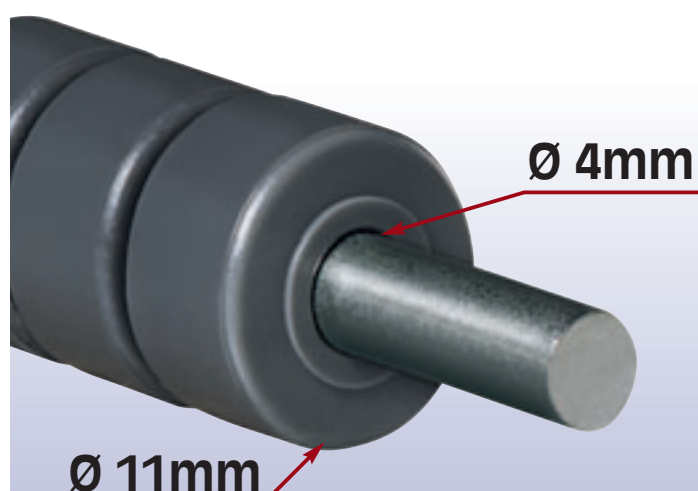
LBP 882T
Sideflexing heavy duty tab
Widths 3 3/4 - 7 1/2 - 10 - 12.



LBP USPM
Heavy duty modular belt
Pitch: 1" (25,4 mm)
Widths: 85 mm and higher
in 85mm increments.



Low Friction
Low Noise

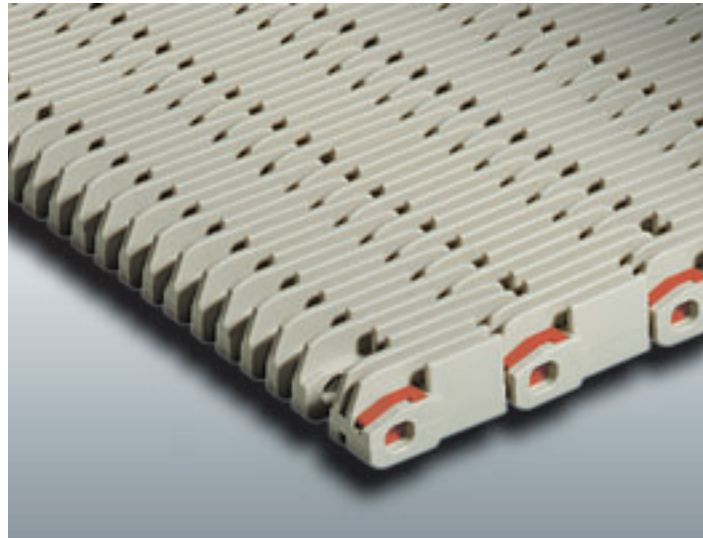


- High ratio outside/inside roller diameter for better rotation capability
- Rollers manufactured in low friction/low noise material
- On larger widths added pin supports are provided to maintain flat carrying surface

Heavy Duty Raised Rib Belts



Matveyor



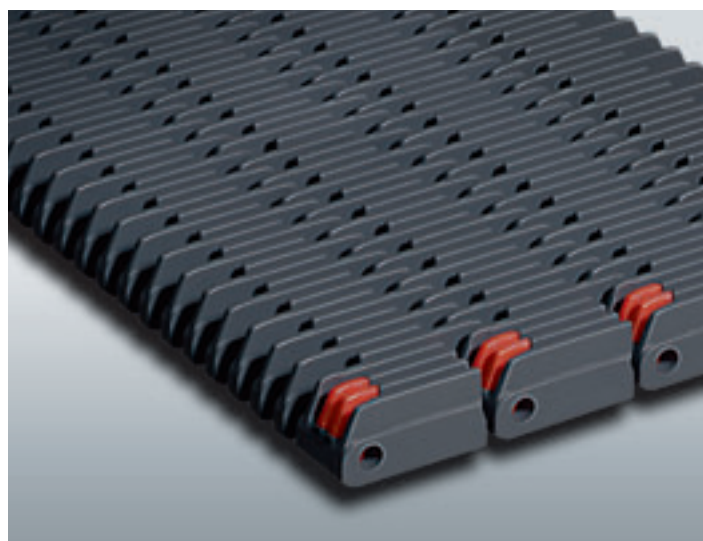
3110

Excellent mechanical strength. This belt can be used for long center to center pasteurizers and heavy loads.



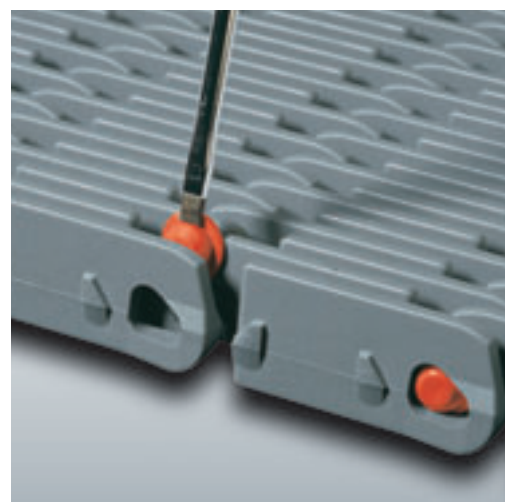
C24 CAM-CLEAN®

40% open area, particularly suitable where optimum liquid drainage is needed. Good mechanical strength.



3120

Optimum combination of open area and mechanical strength. Ideal product support.



All versions have retaining clips for easy assembly and disassembly



**Long Lasting
High Efficiency**



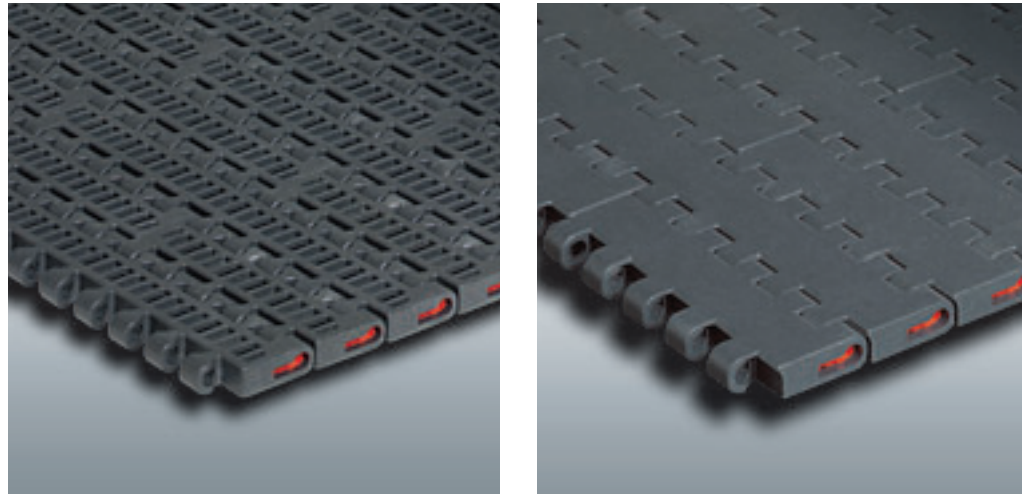
**Ideal ratio rib thickness/spacing
for ideal product support**

Light Duty Chains & Modular Belts



Matveyor

8.7 mm thick dedicated widths and modular belts
1500 (Flush grid) & **1600** (solid top)



Dedicated widths:
 83.8mm & 3 1/4"
 Brick laid modular
 belts: 85 mm
 increments

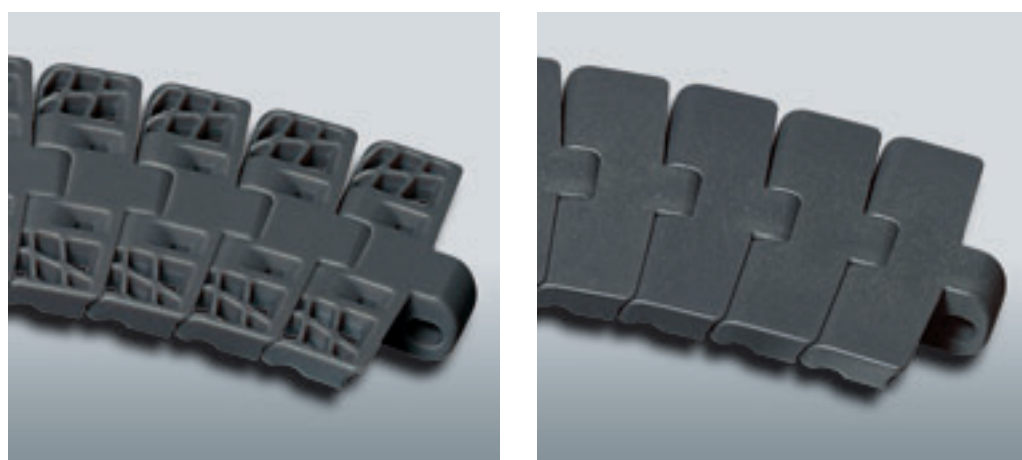


ATM
 (Active Transfer Module)
 For 90° transfer
 without deadplate

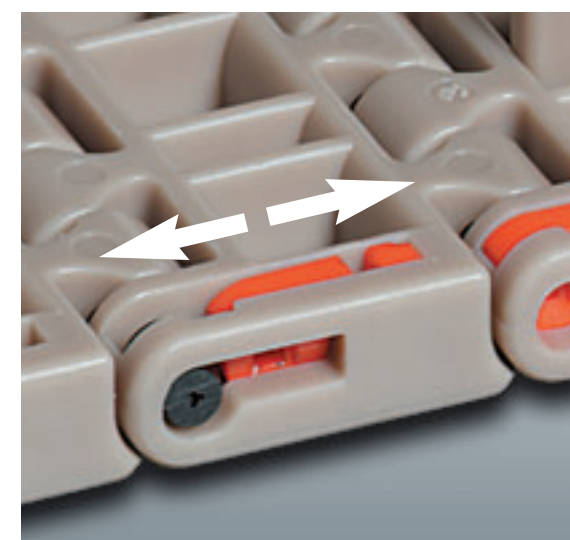
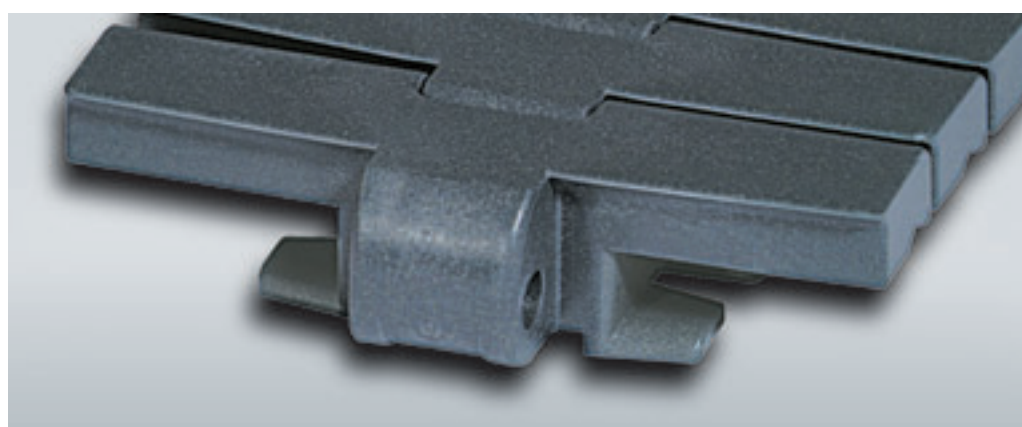


High Wear Life
 Smooth Handling

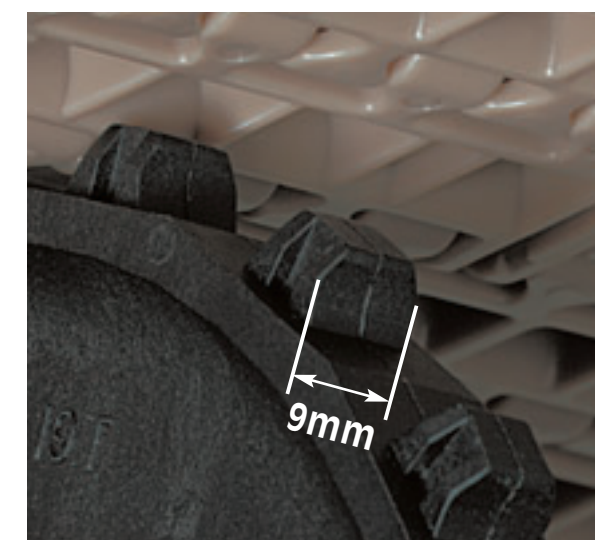
8.7 mm thick sideflexing magnetic and tab chains
 Magnetic: **782M** (flush grid) & **783M** (solid top)
 Tab: **783T** (solid top)



Widths:
 Magnetic 83.8mm
 Tab 83.8mm
 3 1/4" & 4 1/2"



Retaining clips
 for easy assembly
 and disassembly



Wide tooth,
 Reliable drive

DK (Delrin® with Kevlar®) material available

Delrin® and Kevlar® are registered trade marks of DuPont

Heavy Duty Chains & Modular Belts



Matveyor

12.7 mm (1/2") thick dedicated widths and modular belts
Solid top: USP (inch widths) & **USPM** (metric widths)



Dedicated widths: 3 1/4" - 4 1/2" - 7 1/2"
- 83.8mm
Brick laid modular belts
Belt widths: 3" increments (USP)
85 mm increments (USPM)

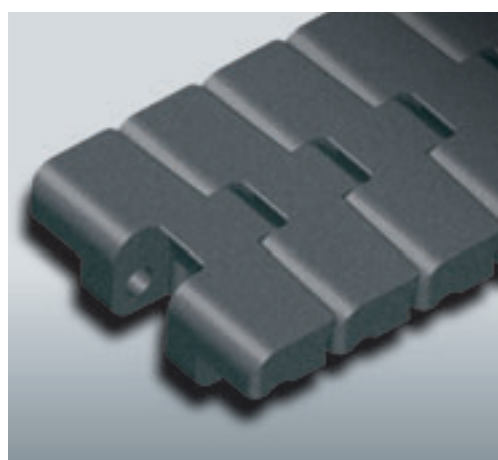


ATM (Active Transfer Module).
For 90° transfer without dead plate

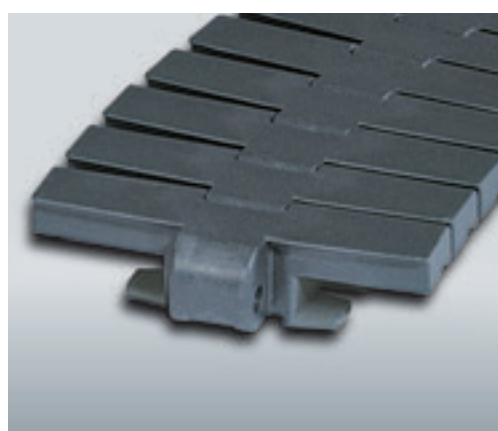


High Wear Life
Resistance to broken glass

12.7 mm (1/2") thick sideflexing magnetic and tab chains
Solid top: 793M (magnetic) & **793T** (tab)



Widths:
Magnetic: 83.8mm
Tab: 83.8mm - 3 1/4" - 4 1/2"



DK (Delrin® with Kevlar®)
material available

Delrin® and Kevlar® are registered trade marks of DuPont



Retaining clips
for easy assembly
and disassembly

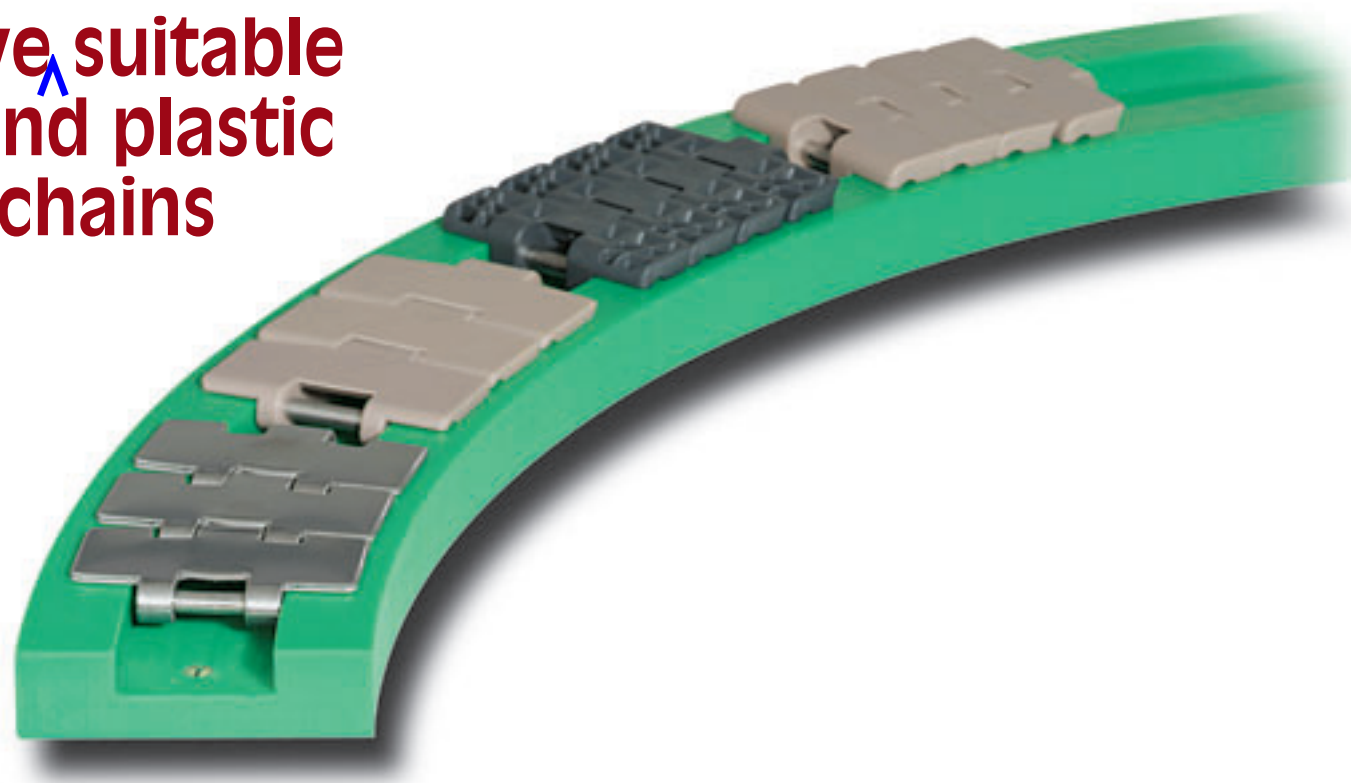


Large sliding
surface and
robust edge: the
ideal conveyor
solution for new
glass line

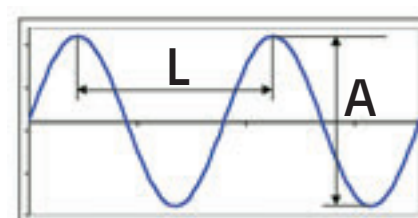
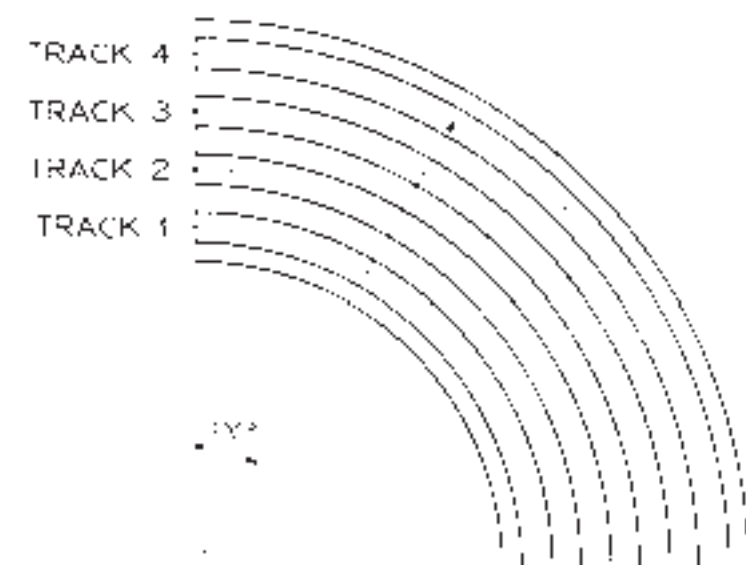
Magnetic Curves



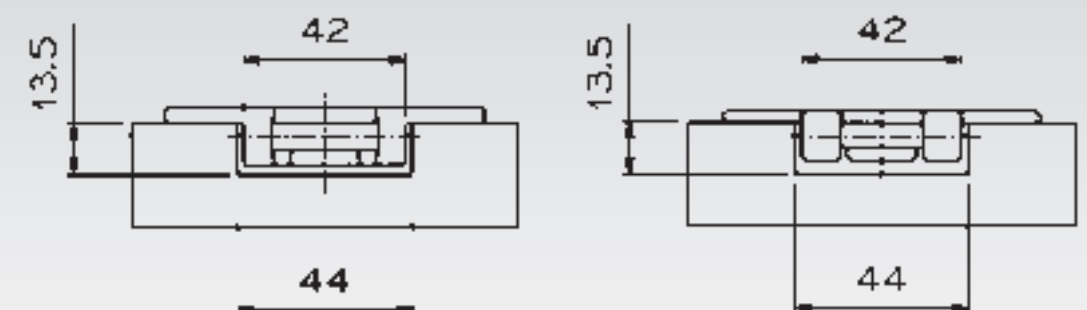
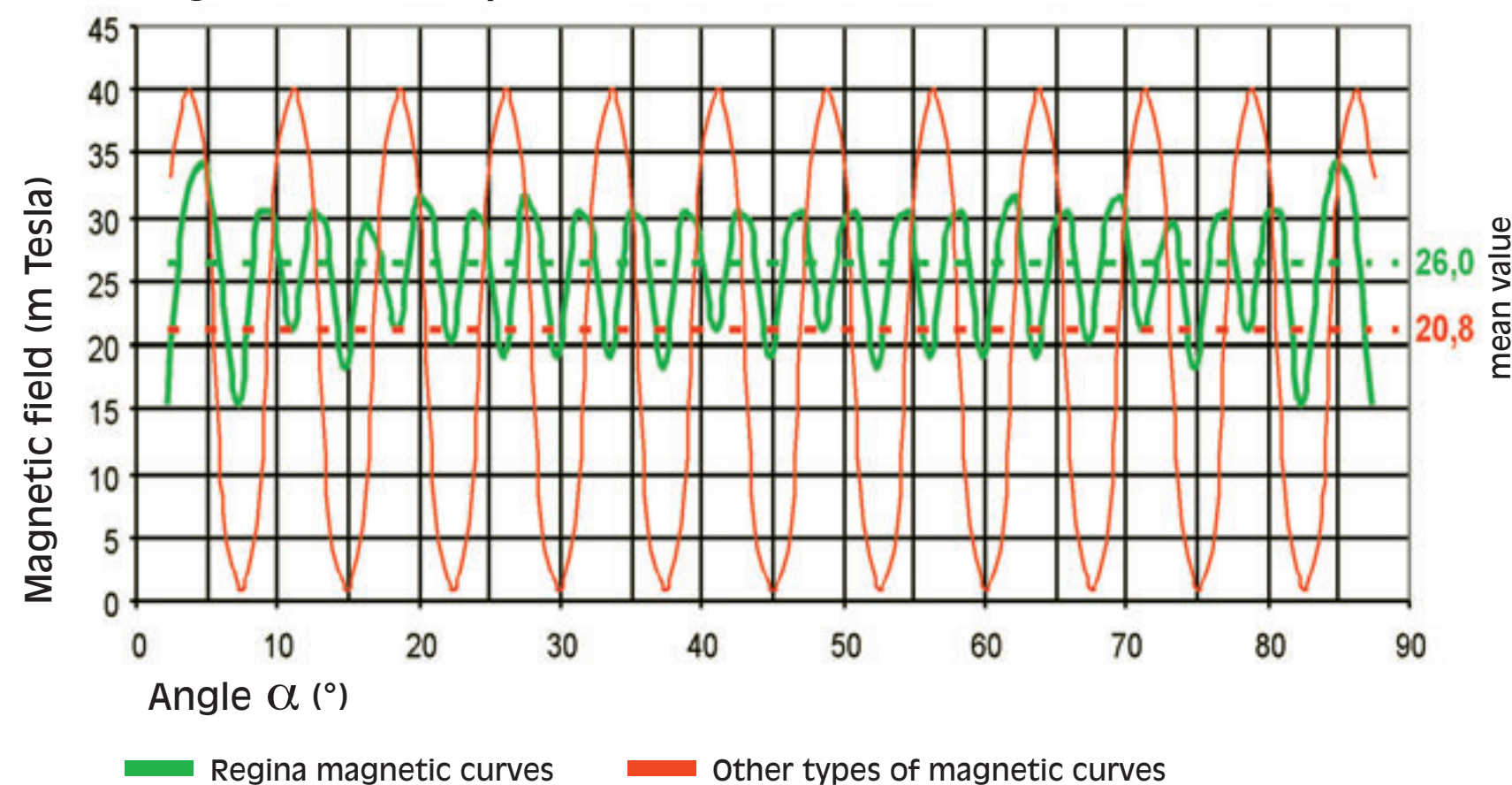
Same curve suitable
for steel and plastic
magnetic chains



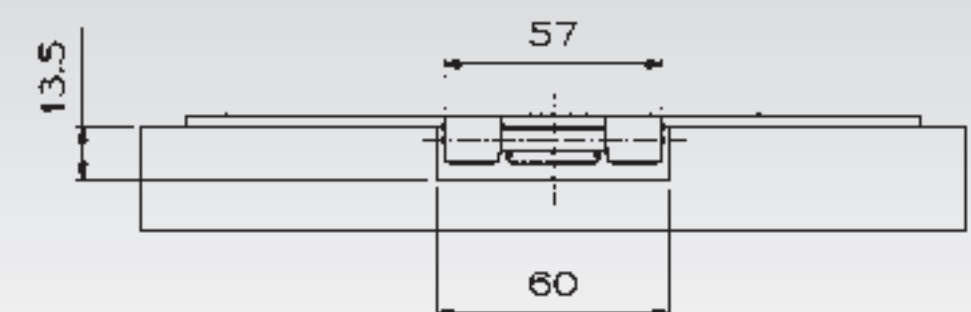
Uniformity of magnetic field



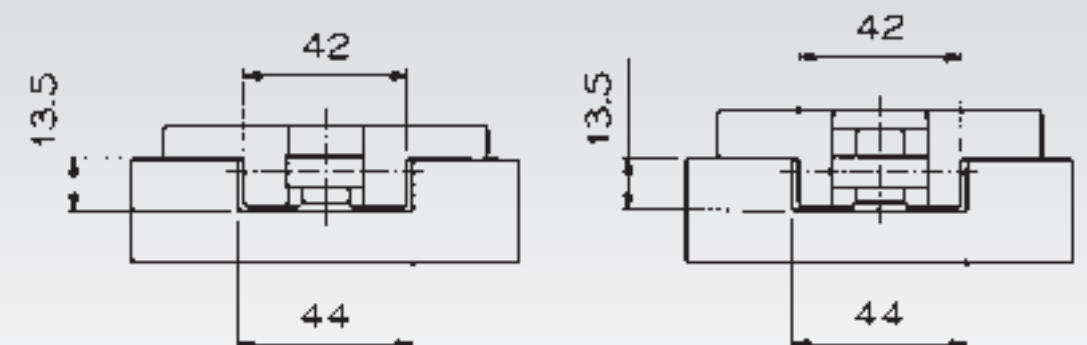
Magnetic field comparison - R500 4 track 90° (Track N°4)



Thickness 3mm (Stainless Steel) - 4mm (Plastic)
Hinge 42mm



Thickness 3mm (Stainless Steel)
Hinge 57mm

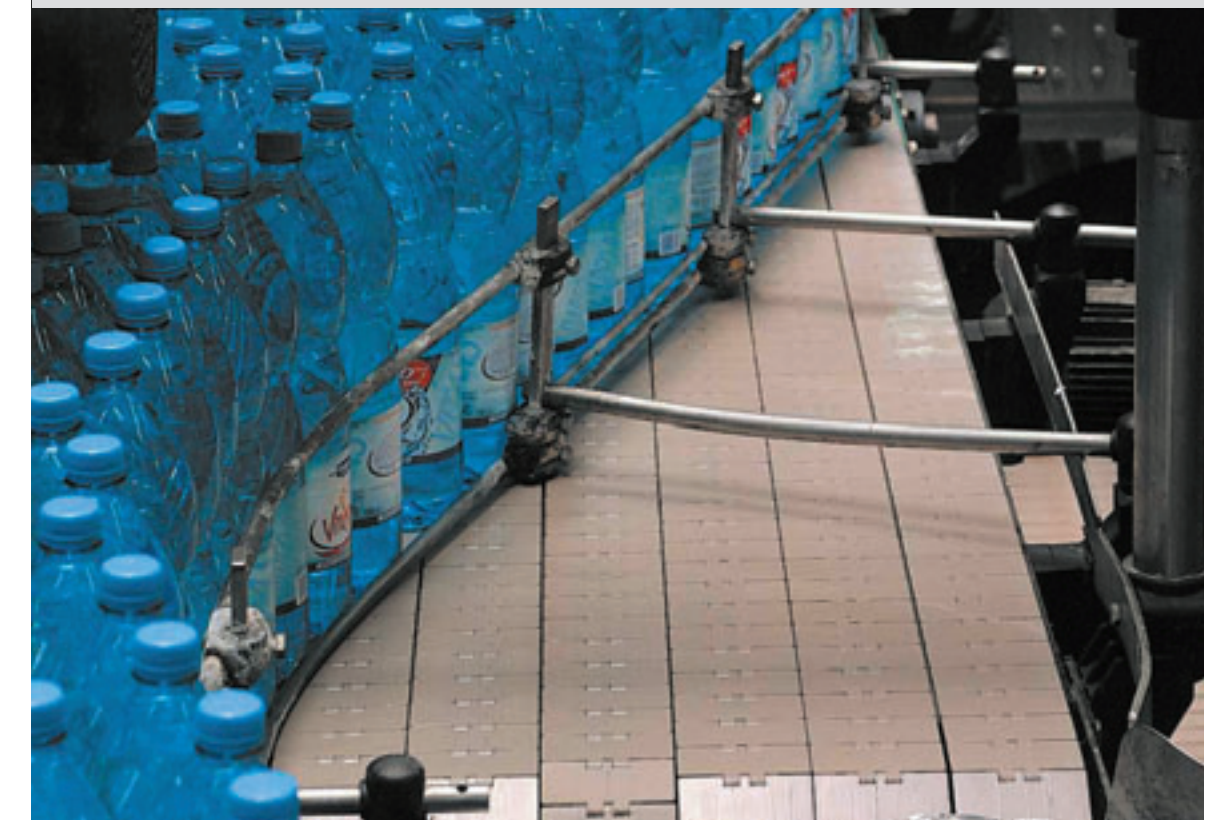


Thickness 8.7mm & 12.7mm (Plastic)
Hinge 42mm

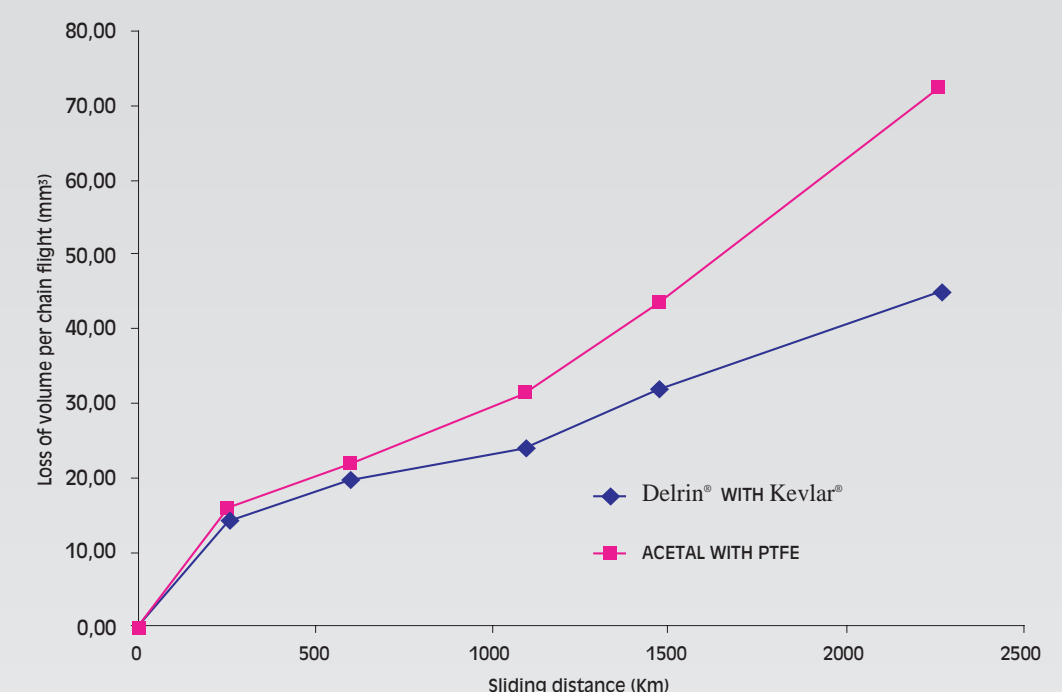
Plastic Chains



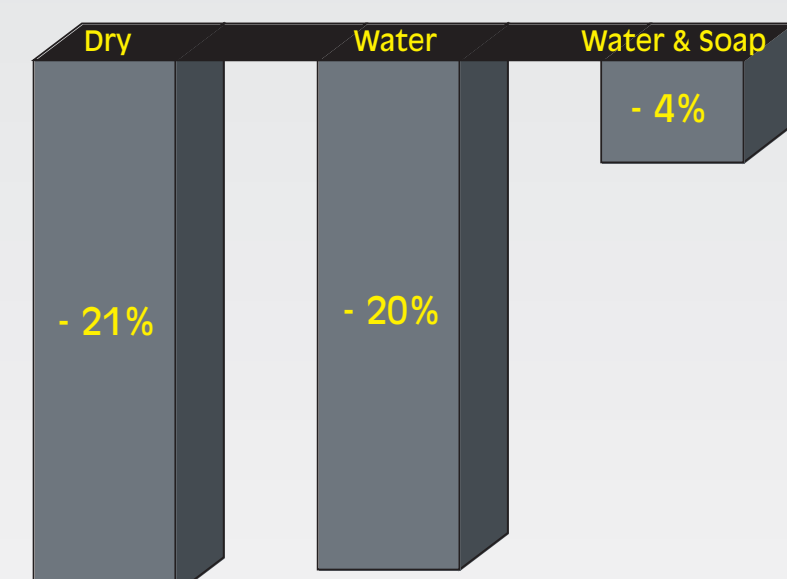
FliteTop[®]



DK (Delrin[®] with Kevlar[®])
Excellent Wear Resistance
Very Low Coefficients of Friction



PET Bottles
 Coefficient of Friction Reduction DK vs Acetal Resin



Straight Running Chains

820: single hinge

831: single hinge reinforced flight

821: double hinge



Sideflexing Chains

880: bevel retention

879: bevel retention, reinforced flight

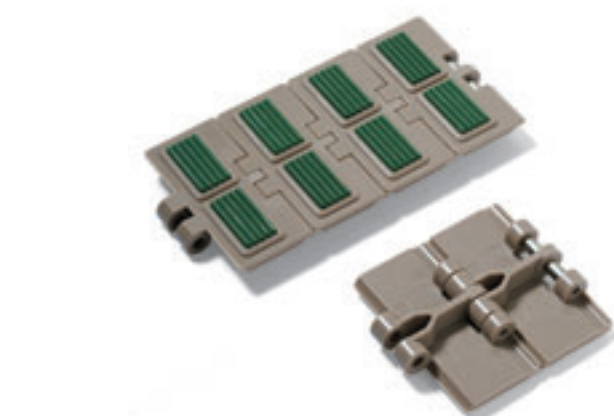
880T: tab retention

879T: tab retention, reinforced flight

880M: magnetic

882T: heavy duty tab

878T: reduced sideflexing radius



HF

Chains with rubber top



Very good flatness

Delrin[®] and Kevlar[®] are registered trade marks of DuPont

Materials:

- DK** (Delrin[®] with Kevlar[®])
- LW** **UP** homopolymer Delrin[®] acetal resins
- AR** reinforced polyamide
- AS** antistatic acetal resin
- P** reinforced polypropylene

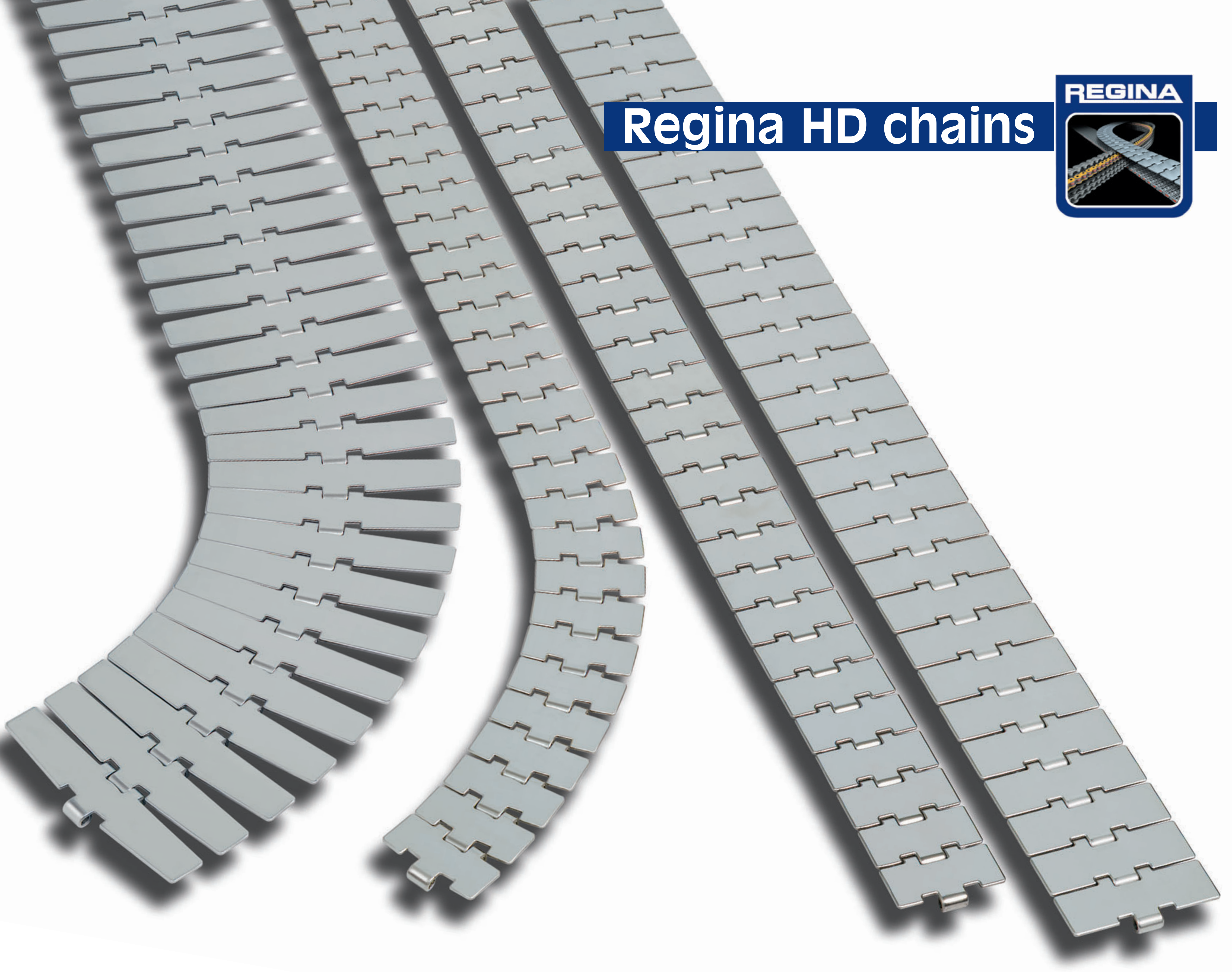
Regina DK (Delrin® with Kevlar®) chains



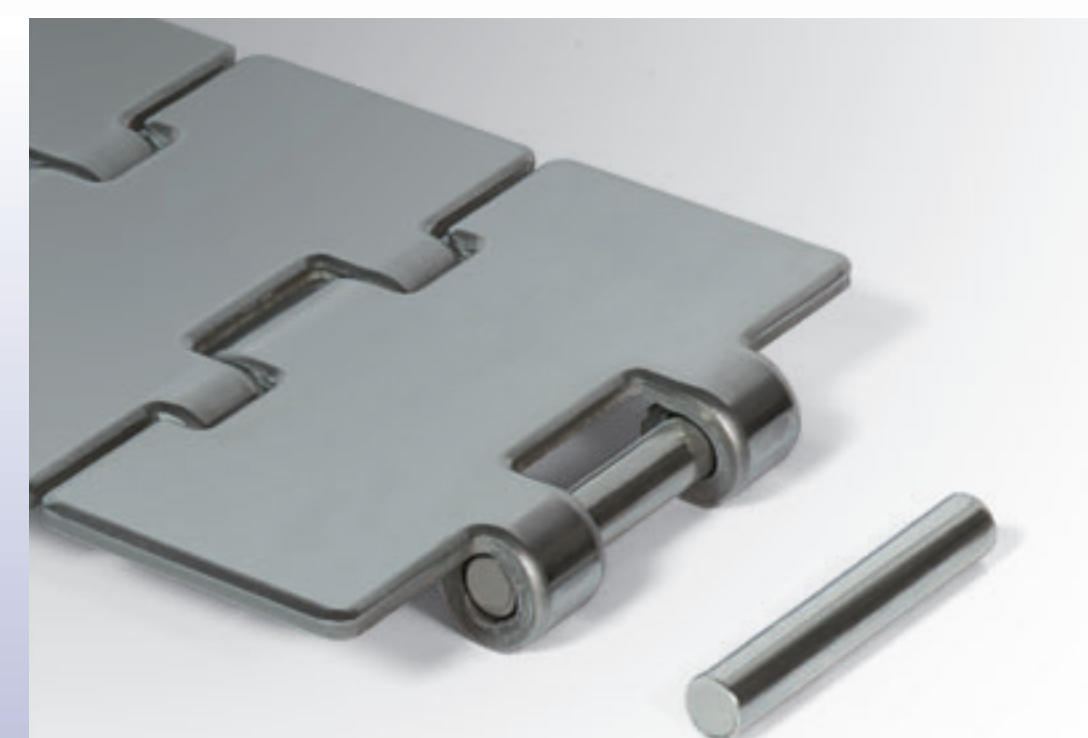
The revolution in dry running application

- extremely high wear resistance
- very low coefficient of friction

Regina HD chains



**Do you have chain elongation
problems due to pin wear?
We have the solution!**



**Hardened
martensitic
steel pin**